

# MACFARLANE CHICK OPERATION

Brian Davis  
Brooder Manager



# Introduction

- ▣ Biosecurity
- ▣ Birds we raise
- ▣ Barn Breakdown
- ▣ Chick Operation “Flow”
- ▣ Equipment we employ
- ▣ Feed
- ▣ Typical Day- 2 Shifts
- ▣ Staff

Biosecurity!!!!

# Biosecurity

- ▣ Disinfectant Mats
- ▣ Danish Entry Systems
- ▣ Footwear
- ▣ Coveralls
- ▣ Younger Birds First
- ▣ Quarantine Potentially Sick
- ▣ Separate Partridge from Pheasants
- ▣ Hand Disinfection

# What birds do we raise?

- ▣ Ringneck Pheasants and strains
- ▣ Hungarian Partridge
- ▣ French Redleg Partridge
- ▣ White Pheasants

# Birds being started in 2018

## Ringneck Pheasants and Strains



# Birds being started in 2018

## French Redlegs



# Birds being started in 2018

## Hungarian Partridge



# Birds being started in 2018

## White Pheasants



# Birds being started in 2018

## White Pheasants

**In 2018 MacFarlane Pheasants  
will produce 300,000 White  
Pheasants!**



# Barns and Capacity

## ▣ 12 Barns

- 9 Pheasant Facilities
- 2 French Redleg Facilities
- 1 Hungarian Partridge Facility

# Barns and Capacity



# Barns and Capacity

Barn A-room starting capacities range from 6000 to 20,000 birds each

If barns are at capacity, our crew is responsible for.....

Over 250,000 birds  
at one time!!!

# Chick Operation Flow

## Barn Setup



# Chick Operation Flow

## Hatchery



# Chick Operation Flow

## Chicks in A-Room



Day 1 through 3 weeks

# Chick Operation Flow

Birds cross to B-room



# Chick Operation Flow





# Chick Operation Flow

After 7 weeks the birds are moved outside with our move-out trailers



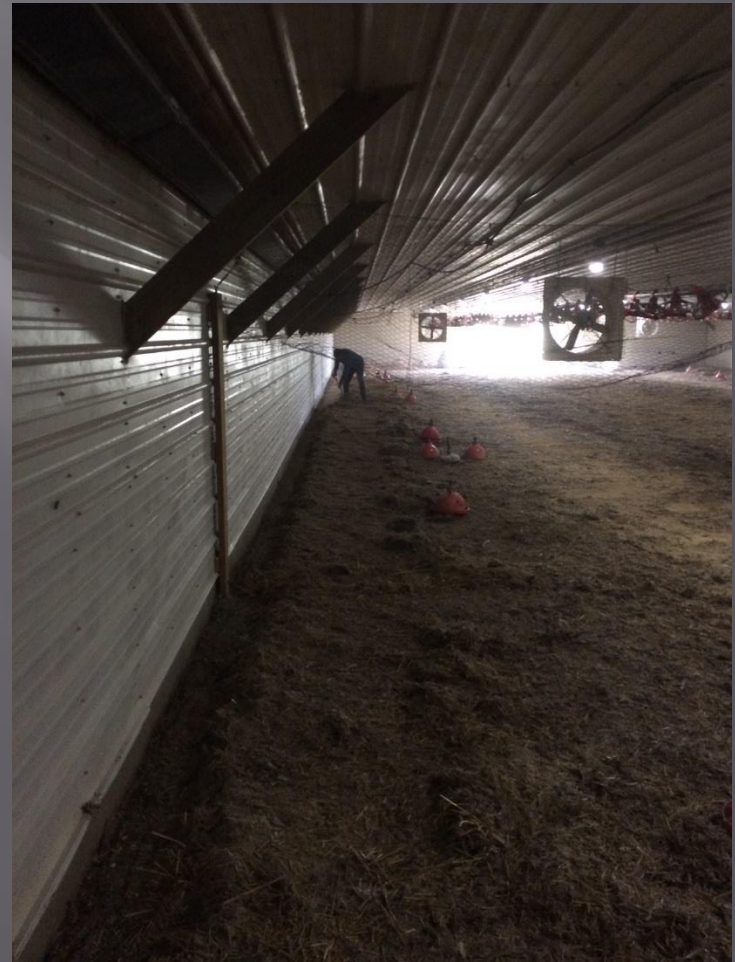
# Chick Operation Flow

## Move-out Trailers



# Chick Operation Flow

Clean out prep.



# Chick Operation Flow

## Room Clean out



# Chick Operation Flow

## Room Sweep



# Chick Operation Flow

Wash/sanitize barn



# Chick Operation Flow

## Pheasant Schedule

Turn Time- 4 weeks

- In General, A-room gets birds every 4 weeks.
- Ideally, A-Room birds move @ 21 days
- B-Rooms go outside at or before 7 weeks.
- Each Barn has 6 “turns” on average

# Chick Operation Flow

## French Schedule

- Ideally, A-Room birds move over @ 28 days
- B-Rooms go outside between 8 and 9 weeks.
- Start 6 groups total

# Chick Operation Flow

## Hungarian Schedule

- Chicks Start on Tables
- Move to A-rooms at 1 week old
- Birds are “Bit over” to B-room near 5 weeks old
- Ideally, B-Rooms go outside at 8 weeks old
- Start 6 groups total

# Chick Operation Flow

Weather is main threat to maintaining flow

If any area gets backed up, there is a domino effect. Chicks are hatching and the rooms must be ready to go on time!

# Equipment We Employ

- ▣ Brooders
- ▣ Feed Systems
- ▣ Waterers
- ▣ Bedding
- ▣ Alarm System

# Brooders



# A-Room Feed System



# B-Room Feed System



# Waterers



# Bedding

A-Rooms- Wood Shavings

B-Rooms- Straw



# Alarm System

Smart Barn - Remote Monitoring & Sensor Portal

MacFarlane Pheasant

Overview Notifications Manage Reports Sensor Maps Support

6 & 7 View Gateways

1 Notification Alerting Acknowledge Details

2 Notifications Pending Reset Details

All	Type	Sensor Name	Data	Last Check In	Signal	Battery
<input type="checkbox"/>		6A	47.5° F	1/30/2018 1:14 PM		
<input type="checkbox"/>		6A - Pulse Counter - 186657	0 Gallons	1/30/2018 1:12 PM		
<input type="checkbox"/>		6A POWER	121.2 Volts AC RMS	1/30/2018 1:21 PM		
<input type="checkbox"/>		6B	58.8° F	1/30/2018 1:38 PM		
<input type="checkbox"/>		6B - Pulse Counter - 186670	1 Gallons	1/30/2018 1:50 PM		
<input type="checkbox"/>		7A	36.3° F	1/30/2018 1:50 PM		
<input type="checkbox"/>		7A - Pulse Counter - 83114	0 Gallons	1/30/2018 1:50 PM		
<input type="checkbox"/>		7B	38.1° F	1/30/2018 1:18 PM		

2:15 PM 1/30/2018



# Feed

## ▣ Ringneck Pheasants

- 28% Prestarter- A- room (0 – 3 weeks)
- 26% Starter- B- room (3 to 7 weeks)

# Feed

## ▣ Hungarian Partridge

- 28% Starter- Crumble Ground Fine- Table room
  - ▣ 0 to 1 week of age
- 28% Starter- Crumble Ground Coarser- A- Room
  - ▣ 1 to 4 weeks (Regular crumble by 3 weeks)
- 28% Starter- Regular Crumble - B- room
  - ▣ 4 to 8 weeks

# Feed

## ▣ French Redlegs

- 27% Starter- Fine Crumble
  - ▣ A- room (0 – 4 weeks)
- 27% Starter- Regular Crumble
  - ▣ B- room (4 to 8 weeks)

# Staffing

Staffed 7 Days a week

1<sup>st</sup> Shift- At least 4 Employees each day

2<sup>nd</sup> Shift- At least 2 Employees each day

# Typical Day in Chick Operation

- ▣ 2 shifts
- ▣ 1<sup>st</sup>- 7am- 4pm
  - Chores, putting chicks down, setting up barns, help peeping, help moving, tearing down, preparing for clean out, Cleaning out
- ▣ 2<sup>nd</sup>- 2pm-11pm
  - Clean outs, washing, barn set ups, fogging new setups, Night checks, Quick Alarm response



# QUESTIONS?

Thank you!